

Enhanced Video Surveillance Solution Smart Technology



VIVAKO



Company Introduction



We, VIVA Co., Ltd. has been a global leading developer and manufacturer of advanced video surveillance products.

To provide quality products to over 50 customers from 20 countries, we have been pursued the world best quality and certified by CE, FCC, ISO, RoHs. VIVA aims at customer satisfaction and study on quality improvement. We always thankful for your business and promise to continue to strive for even greater excellence in the security solution for your success.



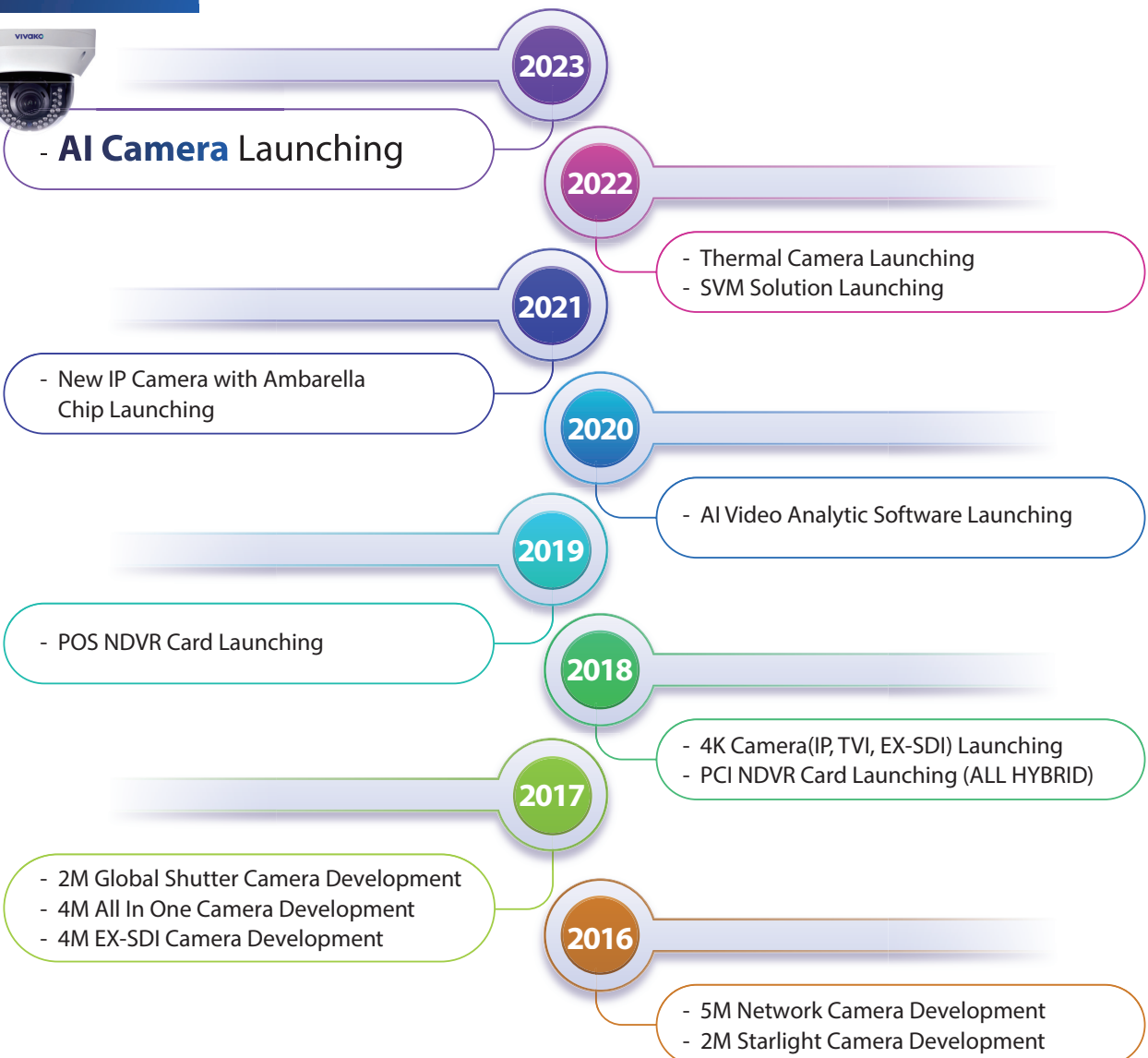
Certificate



Company Introduction



Company History



5M, 8M AI Network Camera

01 Key Feature

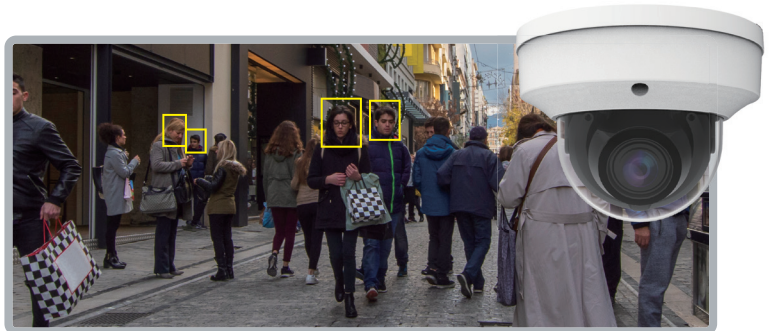
- 5MP, 8MP@30fps
- Supports Smart H.265/H.264 Encoding
- True Day & Night ICR
- IR Distance : 30M(Dome), 45M(Bullet)
- Motorized 2.7mm - 13.5mm Lens
- 3D DNR, True WDR, HLC, BLC and ROI Encoding
- Supports Triple Streams
- Supports Audio Input and Output
- Supports Alarm Output and Input
- IP67 Ingress Protection
- Operating Temperature: -30°C~55°C
- DC12V / PoE (802.3af)
- Built-in MicroSD Card Slot
- Built-in Reset Button



02 Smart AI Technology

Face Detection

Cameras may identify and save detected faces With compatible NVR. They can be organized into desired groups such as a whitelist or black that can trigger alarms based on the defined profile set. On the NVR, you can also perform an intelligent facial search to identify when an individual entered an area and the locations where their face was recognized.

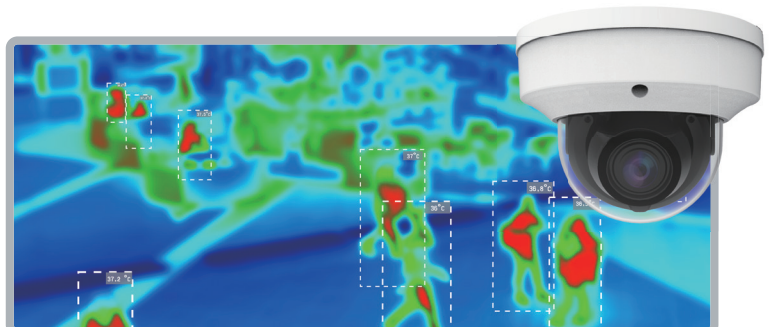


People / Vehicle Detection

Identifies movement of people / Vehicle for more accurate motion recording and significantly reduce the chances of false alerts.

Heat Map

Heat maps allow for effective analysis of foot traffic in designated areas. By having a graphic overlay a congested area, it is easier to have better insights on how busy particular regions are.



4M Active Deterrence Network Camera

01 Key Feature

- 4MP (2680x1520)
- H.265+, H.265, H.264+, H.264, MJPEG
- Max. resolution: 2688x1520
- Full Color / Active Deterrence Camera
- 2.8mm Fixed Lens (F1.0)
- 3D DNR, WDR, HLC, BLC, ROI encoding
- Intelligent Analytics
- White Light LED / Strobe (Blue & Red) Light
- Built-in MIC / Speaker
- Built-in micro SD card slot, up to 256GB
- IP67 ingress protection
- DC12V / PoE power supply



02 Smart AI Technology

Face Detection

Cameras may identify and save detected faces With compatible NVR. They can be organized into desired groups such as a whitelist or black that can trigger alarms based on the defined profile set. On the NVR, you can also perform an intelligent facial search to identify when an individual entered an area and the locations where their face was recognized.

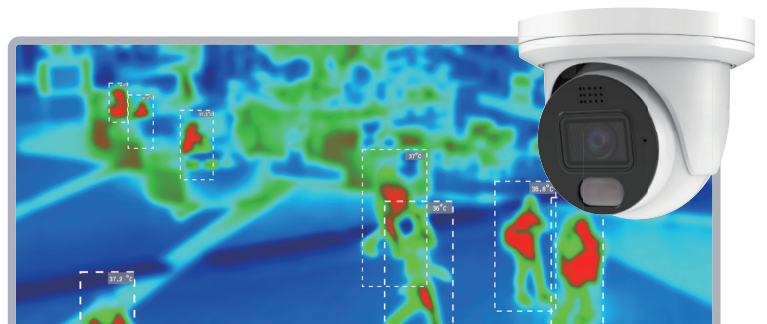


People / Vehicle Detection

Identifies movement of people / Vehicle for more accurate motion recording and significantly reduce the chances of false alerts.

Heat Map

Heat maps allow for effective analysis of foot traffic in designated areas. By having a graphic overlay a congested area, it is easier to have better insights on how busy particular regions are.



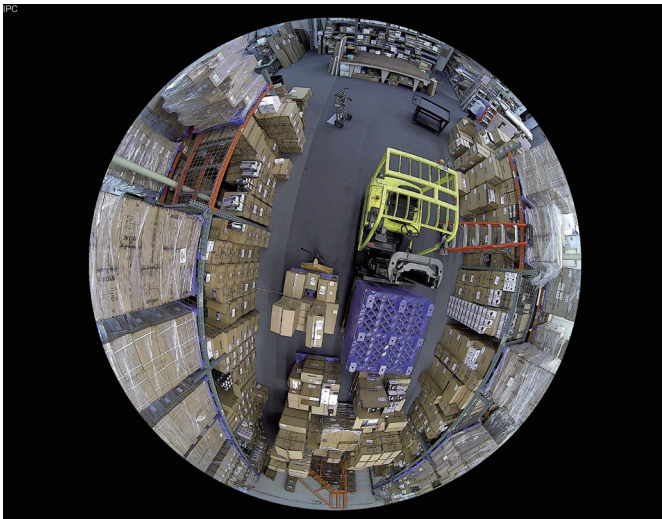
12M 360° Panoramic Network Camera

01 Key Feature

- H.265 Main Profile Video Compression
- 1.7" Sony Progressive 12MP CMOS Image Sensor
- Max. Resolution: 3000 x 3000
- 12MP (3000 x 3000) Full Real Time Coding
- 360° Fisheye Lens, Panoramic View, e-PTZ Function
- True Day/Night ICR Auto Switch
- Hardware Reset
- 3D DNR, True WDR, 8 ROI Encoding, HLC & BLC
- Supports PoE
- Smart Alarm with Motion and Sensor Features
- Compatible ONVIF Profile Protocol
- Supports Triple Streams
- DC12V (±10%) / PoE (802.3af) <12W



02 View Mode Image



Day



Night

32M Multi Sensor Network Camera

01 Key Feature

- 4K (8MP) x 4ch multi-directional each sensor manually adjustable
- 30fps@8MP (3840x2160)
- H.265, H.264, MJPEG, Multi-streaming
- 4 of 2.8-12mm motorized autofocus lens
- 3D DNR, WDR, HLC, BLC, Smart IR, ROI encoding
- Intelligent Analytics
- Max. 30M IR night view distance
- White Light LED Max.15M
- 24VAC / 12VDC / PoE+ Power
- IP67 ingress protection, IK10
- Built-in micro SD card slot, up to 256GB
- Support three streams



02 One camera shows 4CH Image



5M 33x Network PTZ Camera

01 Key Feature

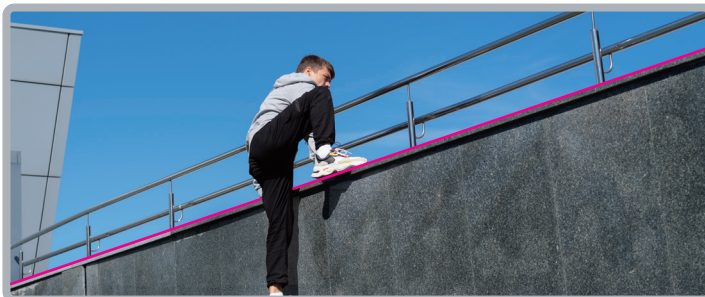
- 5MP (2592 X 1944)H.265+ / H.264+ / MJPEG
- Max. resolution : 2592 X 1944
- Full Color / Active Deterrence Camera
- 4.3 ~ 142mm Motorized Lens (F1.6)
- 3D DNR, WDR, HLC, BLC, ROI encoding
- Intelligent Analytics
- Built-in micro SD card slot, up to 256GB
- IP66 ingress protection
- DC12V / PoE power supply



02 Smart AI Technology

Auto Tracking

Utilizing the Pan/Tilt/Zoom functionality from the camera, auto tracking allows the camera to track moving object automatically. The focused area is centered in the camera view as long as possible with tracking ability, ensuring no important detail is missing.



Line Crossing

Line crossing detects if an object crosses a predefined line based on the desired direction to monitor. Alarm can be set to trigger if the detected target is a human or a motorcycle, bicycle.

People Counting

Calculates the number of people entered and exited a designated area.



5M 33x Network PTZ Camera

03 Specification

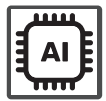
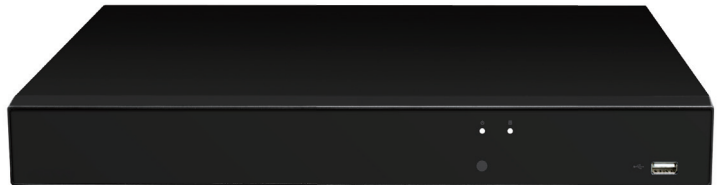
CAMERA	
Image Sensor	1/2.7" Progressive Scan CMOS
Image Size	2592x1944
Shutter Speed	1/5s to 1/20000s
Min. Illumination	Color: 0.003 Lux @ (F1.6, AGC ON), B/W:0 Lux with IR
IR Distance	150M
Lens	4.3mm to 142mm @ F No. 1.6 H: 55(W) - 2.3(T)° V: 41.6(W) - 1.7(T)° D : 67.9(W) - 2.8(T)°
PTZ	
Pan Range	360°
Pan Speed	Configurable from 0.6° to 200°/s; preset speed: 200°/s
Tilt Range	-10° to 90° (auto flip)
Tilt Speed	Configurable from 0.6° to 90°/s, preset speed 100°/s
Optical Zoom	33x
VIDEO IMAGE	
Video Compression	H.265+ / H.265 / H.264+ / H.264 / MJPEG
Resolution	5MP(2592x1944) 4MP(2592x1520), 3MP(2048x1536 / 2304x1296), 1080P(1920x1080), 20P(1280x720), VGA(640x480),QVGA(320x240) @50/60 Hz
Main Stream	60Hz: 5MP(2592x1944) @ 20FPS / 4MP(2560x1440), 3MP(2048x1536 / 2304x1296), 1080P(1920x1080), 720P(1280x720) @ 30 FPS 50Hz: 5MP(2592x1944) @ 20FPS / 4MP(2560x1440), 3MP(2048x1536 / 2304x1296), 1080P(1920x1080), 720P(1280x720) @ 25 FPS
Video Bit Rate	256Kbps ~ 8Mbps
NETWORK / INTERFACE	
Network	RJ45 (10/100BASE-T)
Network Protocol	TCP/IP, HTTP, DHCP, DNS, DDNS, RTP/RTSP, SMTP, NTP, UPnP, SNMP, HTTPS, FTP
Interface Protocol	ONVIF (Profile S/G/T)

FUNCTIONS	
Remote Monitoring	Avycon CMSONE, Avycon Moblie One
Smart Alarm	Motion detection
Smart Analytics	Face Recognition (FR) Human &Vehicle Detection (PD&VD) Perimeter Intrusion Detection (PID)
	Line Crossing Detection (LCD)
	Cross Counting (CC) Stationary Object Detection (SOD) Heat Map (HM) Crowd Density Detection (CD)
	Queue Length Detection (QD)
	license Plate Detection (LPD) Rare Sound Detection (RSD)
GENERAL	
Power Supply	DC 12V/POE+, max. 25.6W
Power Consumption	N/A
Operating Environment	-30 °C to 60 °C
Dimensions	Ø206.4mm X 413.0 mm
Weight	3.7kg
Ingress Protection	IP66

Standalone NVR System

01 Key Feature

- H.265+ codec decoding
- Max. 112Mbps(16CH) input bandwidth
- Up to 8MP(4K) resolution for preview and playback
- Support to install up to 2 HDDs
Max. total capacity of up to 36TB
- Full function network remote view via Internet
(CMS, IE/Firefox/Chrome, Mac Safari)
- No limitation on adding devices to CMS
Max. 128 channels preview (CMSONE)
- Support to save pictures/video to Dropbox storage (Dropbox)
- Support to save pictures/video to FTP server (built by user)
- VGA/HDMI output up to 4K resolution



02 Specification

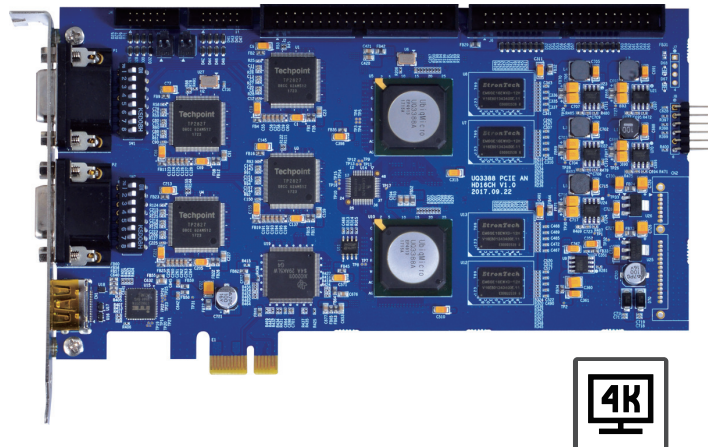
VIDEO	
IP Video Input	16 Channels
Output	HDMI x 1: EDID / 3840 x 2160(4K) / 2560 x 1440(2K) / 1920 x 1080 / 1440 x 900 / 1280 x 1024 / 1280 x 720 / 1024 x 768 VGA x 1: 1920 x 1080 / 1440 x 900 / 1280 x 1024 / 1280 x 720 / 1024 x 768
Incoming Bandwidth (Mbps)	112Mbps
Outgoing Bandwidth (Mbps)	96Mbps
Video Compression	H.265+ / H.265 / H.264+ / H.264
Audio Compression	G.711a
Installation Wizard	Yes
Resolution	8MP / 5MP / 4MP / 3MP / 1080P / 960P / 720P:30fps
PLAYBACK	
Playback Frame Rate	8MP:45fps, 4MP:90fps, 2MP:180fps
Smart AI	Yes
Event Triggers	MD(Sensitivity Level 1~8), Video Loss, Beep, Email, Push Notification to Mobile App
Playback Function	Fast forward / backward (2x, 4x, 8x,16x), Slow forward (1/2x, 1/4x, 1/8x,1/16x)
Playback	Max 16CH playback
INTERFACE	
Password Reset	Factory Reset (Press 10 seconds)
HDD Interface	SATA x 2, Max 18TB HDD
SYSTEM	
PoE	16 x RJ45, 802.3at/af
Ethernet	1 RJ45 10 / 100 / 1000 Base
USB	USB 2.0 x 1 (Front Panel), USB 3.0 x 1 (Rear Panel)
Audio	1 IN / 2 OUT
E-Sata	No
RS485	1
Alarm Input/out	8 IN / 1 OUT
GENERAL	
OSD Language	English and more
Power Consumption	5W (Without HDD)
Power Supply	DC48V/3.75A
Working Environment	0° ~ 40°
Working Humidity	Less than 90%RH (Non-Condensing)
Dimensions	11.81" x 8.94" x 2.09" (300mm x 227mm x 53mm)

4K 16CH Video Capture Card

V4K-1216

01 Key Feature

- H.264 video compression
- 8CH G.711 audio compression
- Expandable up to 16CH Audio Input (Optional)
- Support 8M AHD, TVI, CVI, CVBS Camera
- Support up to 2160p(4K) for 16CH in real time live view
- 4CH UHD video compression 2160p@60fps + VGA@60fps
- H.264, MJPEG - Dual Streaming
- Motion detection, Video loss, Privacy masking
- Frame rate dynamic setup by OSD
- SPOT Monitor - 1x HDMI, 1x CVBS
- PCI-Ex1 Lan Port
- SDK in Windows OS, Linux OS



02 Specification

Model		V4K-1216
General	Encoder	UQ3388
	PCI Standard	PCI-Express 1.0x Gen2
	Multi-Card Operation	Support Max. 4 cards
Video	Sub Card	Audio Input 8Ch(RCA) with an audio expansion
	Input	16x BNC(AHD, TVI, CVI, CVBS Camera)
	Standard	1080P(25,30) / 720P(25,30,50,60)
	Preview Resolution	Max.1080P in real time, Support of main preview and sub preview
	Compression	H.264, MJPEG
	Encoding Speed	Max. 2160P@7.5fps for each channel
	Encoding Speed	Main Stream : 16CH x 2160p@7.5fps for each channel Extra Sub-Stream: Max. 640 x 480 with Max 480fps
	Bit Rate	256Kbps ~ 10Mbps
	Compressed Stream	Support,Full-channels@1080P,720P,1080P/8, 720P/8, including other sub-streams
	TV SPOT	1x HDMI(1920x1080), 2x CVBS, 1/16 display split
Audio	Input	8x RCA input, Additional 4x RCA input with Expansion sub card - Optional
	Compression	PCM, G.711-A law, Mu law, ADPCM
	Sampling Rate	8, 16bit (8KHz, 16KHz,32KHz, 44.1KHz)
	Bit Rate	Min. 64kbps
System Requirement	Operating System	Windows XP/7/8/10, Linux
	CPU	Intel or AMD
	Motherboard	Intel or AMD chipset PCI-E slot
	Memory	8GB Above
Environmental	Graphics	AMD, NVIDIA, Intel graphics cards
	Working Environment	-10 ~ +55 °C / 10~90%RH / 86~106kpa
	Power Requirement	12V±10%, 3.3V±10%
	Power Consumption	15W less
	Dimension	217mm x 105mm

VIVAKO

A: #2-3F, 100 Cheongjung-ro, Bupyeong-gu, Incheon, 21312, Republic of Korea

T: +82-32-511-7730

F: +82-32-511-7731

E: christine@vivako.com

W: <http://www.vivako.com>

